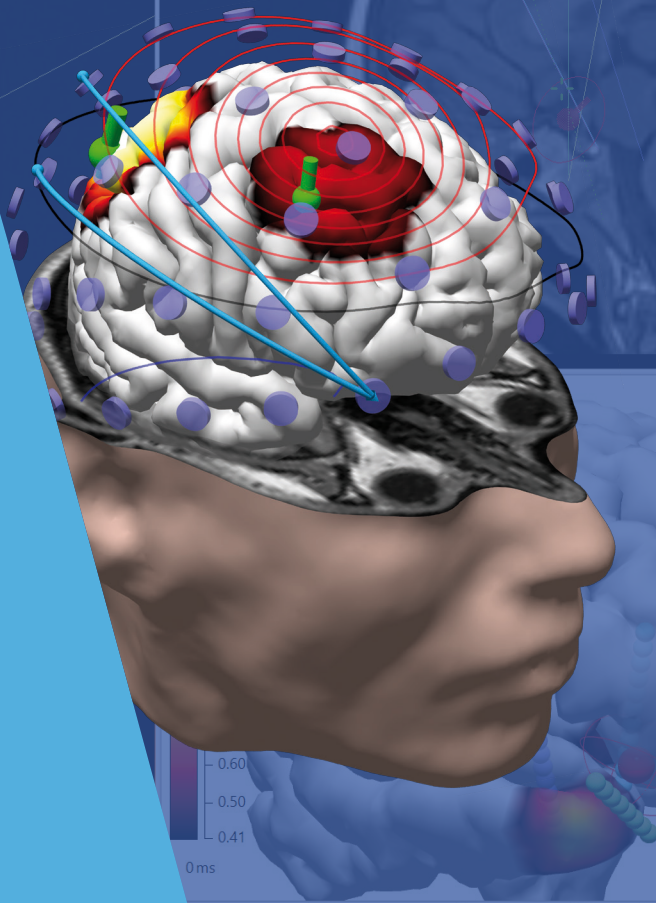


# Compumedics Neuroscan Clinical CURRY® Workshop: **Source Localization in Epilepsy Evaluations**



Host: **John S. Ebersole, MD**  
Date: **November 4 - 8, 2024**  
Venue: **Online**



## **Compumedics Neuroscan is pleased to announce its next Epilepsy Clinical Workshop featuring the CURRY® Software.**

This hands-on workshop, which is intended for physicians and EEG/MEG technologists, is specifically focused on the evaluation and pre-surgical planning of epilepsy, based on EEG data.

The school will run from Monday to Friday 11am - 2pm New York Time (UTC-5) /  
5pm - 8pm Brussels Time (UTC+1).

Clinical lectures alternate with CURRY® software hands-on sessions.

### **COURSE OUTLINE**

- Introduction to basic EEG review and source localization with CURRY®
- Inter-ictal and ictal data review, spike/seizure marking, event segregation by field analysis, and spike/seizure averaging
- Source analysis methods for the above data types will be reviewed, including the use of individual MRI-based realistic head models
- Intracranial EEG review, including integration with MRI and CT to localize electrodes as well as co-registration with other functional imaging data sets such as PET. Use of CURRY® for intracranial electrode placement planning will also be included.

## All hands-on sessions will be performed with the CURRY® software.

- CURRY® software and course data will be made available for download and need to be installed prior to the course
- PCs or laptop computers must run Windows 7 (64 bit) or later - Windows 10 or higher is recommended - and should be equipped with a wheel mouse
- Apple computers with Intel processors must run Bootcamp and Windows 7 (64 bit) or later - VMWare or Parallels are not recommended
- Apple computers with non-Intel processors are not supported

## To register -

<https://event.gotowebinar.com/event/37f2f4dd-c582-48c7-bc24-202b129156fd>

Course tuition is USD/EUR 550 including online lectures, Q&A sessions, and a time-limited CURRY® license.

A discount applies if you have purchased CURRY® in the last 12 months.

## COURSE INSTRUCTORS

Our training courses are conducted by Compumedics' top research scientists, with clinical lectures provided by Dr. Ebersole.



### JOHN S. EBERSOLE, MD

Medical Director of the MEG Center at Overlook Hospital in Summit, NJ, Atlantic Neuroscience Institute

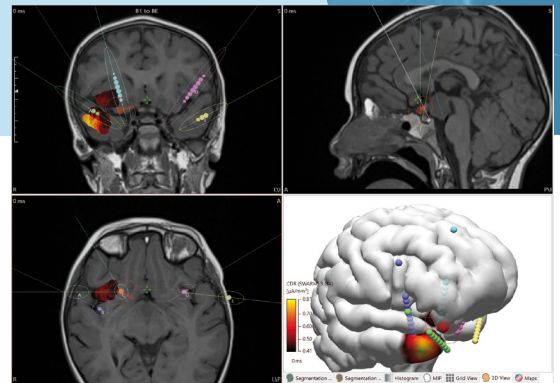
International authority on **EEG and MEG source modeling in the evaluation of epilepsy**.  
Author of **50 original research publications** and **40 chapters** on neurophysiological subjects.



### FERNANDO GASCA, PhD

Software Developer, Compumedics Neuroscan

Member of the CURRY® software development team in Hamburg. He has extensive knowledge of CURRY® and was involved in the development of the **Image and Signal Processing** modules, the **Finite Element Method (FEM)** functionality and **automatic spike and seizure detection**.



[www.compumedicsneuroscan.com](http://www.compumedicsneuroscan.com)

For more information please contact:

**Compumedics Limited, Australia:**  
Headquarters  
30-40 Flockhart Street  
Abbotsford VIC 3067, Australia  
Ph: +61 3 8420 7300  
Free Call: 1800 651 751

**Compumedics USA, Inc.:**  
5015 West WT Harris Blvd, Suite E  
Charlotte, NC 28269, USA  
Toll Free: +1 877 717 3975  
Ph: +1 704 749 3200

**Compumedics Europe GmbH:**  
Petriplatz 5  
09599 Freiberg,  
Germany  
Ph: +49 3731 259 6554

**Compumedics France SAS:**  
2 rue Henry Bergson,  
F-67000 Strasbourg,  
France  
Ph: +33(0) 981 062 869

[www.compumedics.com](http://www.compumedics.com)